

Master Course

Application Guidelines

< Reference Only >

- ◆ Business
- ◆ Economics
- ◆ Law
- ◆ Literature and Human Sciences
- ◆ Science
- ◆ Engineering
- ◆ Human Life Science

*The application guidelines for the Graduate School of Medicine, the Graduate School of Nursing, and the Graduate School of Urban Management are issued separately.

OSAKA CITY UNIVERSITY

● Principles and Basic Policies of Osaka City University

Principles of Osaka City University

- Achieve the universal mission of all universities: To cultivate outstanding human resources and pursue the truth
- Be a university that Osaka City residents are proud of.
 - View cities as a place for academic creation, and meet the various challenges of cities by accumulating knowledge.
 - Return the results of education and research to the city and its residents to contribute to the development of the local community and global society.
- Be a university that is beloved by the residents of Osaka.
 - Carry on the traditions and culture of the city of Osaka as an urban university.
 - Promote free and creative education and research, as well as high quality medical care.
 - Work together with residents to improve the various functions of the city, including culture, economy, industry, and medicine, with the aim of realizing true wealth.

Basic Policy on Education

- Stand on the principles of a university for the residents, with the city of Osaka in the background
- Contribute to the happiness and development of humanity
- Fulfill the role of a guiding force in various fields, and cultivate human resources who can succeed in society

Basic Policy on Research

- Promote original and distinctive research with the goal of creating new knowledge
- Tackle various challenges faced by the city, return the results to city and its residents, and contribute to the development of the local community
- Promote research that will lead to the creation of new industries, and return the results to society

Goals for Human Resource Development

Develop human resources who can systematically study research results in their respective academic fields, and who have the creative ability to apply develop these to interdisciplinary fields.

[Distinctions and Goals of Education at Osaka City University]

Osaka City University (OCU) traces its beginnings to the 1880 founding of Osaka Commercial Training Institute. It was later renamed as Osaka City Commercial College, launched as the first municipal university in Japan, and continues today as a public university with a long history and tradition. It is one of the few comprehensive public universities, making progress as a research university on a foundation of high level, diverse academic research. Simultaneously, the university has cultivated people responsible for the development of Osaka and the future of Japan and the world, with an “academic culture that emphasizes the organic connection of theory and reality” and a respect for independent and enterprising character rooted in the spirit of the city.

As a university that practices these traditions while encompassing diverse academic fields including 8 undergraduate faculties and 10 graduate schools, OCU makes use of its status as a place for various types of international and unique research, while conducting education in small classes with sophisticated, open-minded students. OCU aims to always cultivate the next generation of people who will learn to judge the value of truth, goodness, and beauty, develop a sense of wisdom and civic duty, and collaborate with diverse parties while fulfilling a leadership role in many fields in their community and society, in order to contribute to the harmony and development of Osaka, Japan, and the world as a whole, which now face many diverse challenges.

<The Three Policies of the Osaka City University Graduate School Courses>

[Diploma Policy]

Osaka City University, through its graduate school education, cultivates students who can contribute to society and researchers and professionals who will advance their expertise, develop broad knowledge, and fuse these together.

In order to achieve this goal, OCU awards degrees to students who master advanced knowledge and skills related to their field of expertise established in their graduate school, follow research guidance in line with the principles and purpose of the education and research of their graduate school, earn a certain number of units during a certain period of enrollment, and pass examinations and tests.

In the master courses, the standard for completing the program is whether or not a student has mastered advanced knowledge and skills concerning their field of expertise and the basic elements of their field concerning their department's field, and developed the ability to contribute to the development of that field and apply and develop this knowledge to other fields by systematic study of various academic fields and research results and their own independent research activities.

[Curriculum Policy]

Osaka City University, in order to achieve the study results stated in our diploma policy, has systematically composed an educational program consisting of classes on the department fields of each graduate school, graduate school general education classes provided to the entire university regardless of graduate school, and doctoral program education leading program classes prepared separately from the main departments. The university also holds classes in diverse formats including lectures, seminars, and practical training, to conduct research guidance in line with the principles and purposes of the education and research of each graduate school.

Graduate school general education classes are established with the purpose of students developing the right attitude to do research from a universal and fair perspective beyond their expertise, which is necessary for achieving educational and research goals through the graduate school curriculum.

[Admission Policy]

Osaka City University, through its graduate school education, in order to cultivate students who obtain the results of study stated in the university's diploma policy and achieve educational goals, accepts students both from Japan and abroad who have solid fundamental academic abilities and adequate knowledge in their field of expertise gained through study in undergraduate and graduate educational programs, who have a rich humanitarian spirit, and the will to contribute to the development of industry, culture, lifestyle, and environment in science and cities, as well as a strong sense of curiosity.

In order to fairly select such students, the university implements various selection methods for each recruitment unit of graduate schools and their departments.

※ See the following for the details.



http://www.osaka-cu.ac.jp/ja/admissions/admission_policy/

〈Course Term〉

The standard study period of the master course is 2 years.

The Graduate School of Law, Graduate School of Literature and Human Sciences, Graduate School of Science, and the Graduate School of Human Life Science, have an extended studies program that allows students to systematically complete the curriculum and their course over a set period beyond the intended period of study, for reasons such as employment, child rearing, or nursing care. For details, please contact the administrative office for each graduate school at the Student Support Center (Please see the back cover).

Table of Contents

<Special Admission of International Students>

1	Number Admitted	1
2	Applicant Qualifications	1
3	Advance Consultation	2
4	Application Documents	2
5	Submitting of Applications	6
6	Selection of Applicants	7
	(Selective Tests)	
	Graduate School of Business	7
	Graduate School of Economics	9
	Graduate School of Law	1 1
	Graduate School of Literature and Human Sciences	1 2
	Graduate School of Science	1 5
	Graduate School of Engineering	1 7
	Graduate School of Human Life Science	2 1
7	Applicants who desire special consideration when taking exams or studying	2 3
8	Announcement of Application Results	2 3
9	Enrollment Procedures	2 3
10	Tuition Fees	2 4
11	Notes of Importance	2 4
	<Review of Applicant Qualifications>	2 5
	○ Campus Map and Access Information	2 7
	○ Inquiries	2 8

<Special Admission Track for International Students>

1. Number Admitted

Grad School	Department	Admission Capacity	Number Admitted
Business	Global Business	20	A few
Economics	Modern Economics	20	A few
Law	Law & Political Science	15	A few
Literature and Human Sciences	Philosophy & History	14	A few
	Human Behavioral Science	16	A few
	Language & Culture	22	A few
	Asian Culture & Urbanism	8	A few

Grad School	Department	Admission Capacity	Number Admitted
Science	Mathematics & Physics	29	A few
	Molecular Materials Science	34	A few
	Biology & Geosciences	29	A few
Engineering	Mechanical & Physical Engineering	33	A few
	Physical Electronics & Informatics	56	A few
	Applied Chemistry & Bioengineering	33	A few
	Urban Engineering	47	A few
Human Life Science	Human Life Science	53	A few

Application guidelines for the Graduate School of Medicine, Graduate School of Nursing, and Graduate School of Urban Management are issued separately.

- Note 1)** Depending on the results of the selective tests, the number of students who pass the exam may not reach the normal number admitted.
- 2)** A second round of admissions may be held depending on the graduate school (or department). In that event, the application guidelines will be distributed around November 2018 (with examinations planned for February and March 2019).
- 3)** A recommendation admission track has been established for the Graduate School of Business, Graduate School of Economics, Graduate School of Law, Graduate School of Science, Graduate School of Engineering, and the Graduate School of Human Life Science. Only a few students will be admitted this way to each graduate school (included the seats open above).

2. Applicant Qualifications

Applicants must not have Japanese nationality and must meet one of the followings:

- (1) Have completed or expect to complete 16 years of school education in a foreign country by March 2019.
- (2) Have completed or expect to complete 16 years of school education of a foreign country through correspondence courses provided in Japan by a foreign school of said country by March 2019.
- (3) Have completed or expect to complete the curriculum of an educational facility in Japan which is positioned in the academic educational system of a foreign country as having the curriculum of a university of that foreign country (limited to applicants who have completed 16 years of curriculum in academic education of a foreign country), and has been specially designated by the Minister of Education by March 2019.
- (4) Have graduated or expect to graduate from a Japanese university as an international student by March 2019, or have completed or expect to complete the vocational curriculum of a vocational school specially designated by the Minister of MEXT (the Ministry of Education, Culture, Sports, Science and Technology of the Japanese Government) on or after a date designated by the Minister of MEXT or by March 2019.
- (5) Be designated by the Minister of Education through the 1953 Public Notice of the Ministry of Education No. 5.
- (6) Have completed an academic program of either a foreign university or a foreign educational institution (limited to which its comprehensive progress of education and research have been evaluated by an external personnel certified by its government or its related agency, or an institution designated as equivalent by the Minister of MEXT) whose term of study is at least 3 years or more (including completion of the said program in our country earning credits from its institution's correspondence course or from an educational facility established in Japan under the school education system of the said foreign country designated as (3) in the preceding issue), and have earned or expect to earn by March 31, 2019, a bachelor's degree or an equivalent degree.
- (7) Have been admitted to a graduate school by the provisions of Article 102, Paragraph 2 of the Academic Education Act as an international student, and have been recognized as having appropriate academic ability to receive education in that graduate school.
- (8) Have been enrolled as an international student at a Japanese university for at least 3 years or at a 4 year university in a foreign country for at least 3 years, or have completed 15 years of curriculum and obtained a certain number of unit in the corresponding graduate school with excellent grades as of the end of March 2019.

- (9) Have been recognized as having academic ability equal to or greater than a university graduate via individual admission qualification review in the corresponding graduate school, and be age 22 or older as of March 31st, 2019.

- Note 1)** The vocational curriculum of vocational schools in 2: Applicant Qualifications (4) shall have a term of study of at least 4 years and meet other criteria set forth by the Minister of Education.
- 2) Applicants who wish to apply via 2: Applicant Qualifications (6), please inquire with the Admissions Office by June 29th, 2018 (Friday).
- 3) Applicants who wish to apply via 2: Applicant Qualifications (7) to (9) are required to submit an “Application Qualifications Review Application Form”, so apply in advance to the office in charge of each graduate school in the Student Support Center, then be certain to submit the necessary documents to the administrative office for each graduate school at the Student Support Center by July 5th, 2018 (Thursday) (See <Review of Applicant Qualifications> on page 25).

3. Advance Consultation

Aspiring applicants are required to confirm their applicant qualifications and their desired academic supervisor, so be certain to make an advance consultation with that academic supervisor before submitting an application (by July 5th, 2018 (Thursday)). Contact the administrative office for each graduate school at the Student Support Center for the contact information of academic supervisors. (The telephone number of the offices in charge of each graduate school is on the back cover.)

Advance consultation is not required for academic supervisors in the Graduate School of Business. For the Graduate School of Economics, see Note 2 on pages 9 and 10.

4. Application Documents

* Additional documents may be required to submit as necessary.

(1) Application Documents (Common to all graduate schools)

1	Admission Application Form (2 portrait photographs)	<p>① The applicant shall complete the form provided by Osaka City University in black ballpoint pen (Erasable pen not permitted).</p> <p>② Do not fill in fields marked with ※.</p> <p>③ Attach one copy of the same 4 cm x 3 cm portrait photograph (upper body, no headwear, taken within 3 months of application) on the exam ticket and exam photo ticket.</p> <p>④ For the “Desired Course” and “Exam Subjects” fields, read “Notes on Writing an Application” in 6. Selection of Applicants (Selective Test) (page 7 onwards) and only fill out the specified fields.</p> <p>⑤ Changes may not be made after submitting the application.</p>
2	Academic Transcripts and Certificate of (Expected) Graduation	<p>From the most recent alma mater (or currently enrolled school). <With a degree such as a bachelor’s degree> (However, this does not apply to applicants who have graduated from the undergraduate faculty of OCU that is the foundation for the graduate school they are applying to (for example, the Faculty of Business in the case of the Graduate School of Business), and applicants who fall under 2. Applicant Qualifications parts (7) to (9).) See “Note” below.</p>
3	Proof of Japanese Language Ability	<p>Applicants who have taken an official test shall submit a copy of their grade report.</p> <p>Applicants who have taken Japanese language classes at a Japanese language school or a university shall submit proof of this Japanese study written and officially stamped by the advisor, that the applicant has obtained a level of Japanese language ability that will not impede their studies (free format).</p> <ul style="list-style-type: none"> • The personal stamp of the advisor is not acceptable.

4	Documents proving status and period of residence	<p>Applicants residing in Japan Copy of the front and back of their “Residence Card” or a “Copy of Certificate of Residence (Original)” issued by a municipal government (documents listing nationality, residence status, residence period)</p> <p>Applicants residing outside of Japan or only visiting short term Submit copies of the page including portrait picture, nationality, and name, and the page listing permission to enter Japan (for short term residents only) of a “Copy of Passport”.</p>
5	Exam Ticket Envelope	Use the envelope specified by Osaka City University with a ¥362 stamp, and write the postal code, address, and name of the exam ticket recipient on the envelope.
6	Applicant Qualifications Certification Notice	Only applicants applying via 2. Applicant Qualifications (7) to (9) shall submit this.
7	Curriculum Vitae	<p>The applicant shall fill in the form designated by Osaka City University using a black ballpoint pen (erasable ballpoint pens are not acceptable).</p> <p>① Include the entire period spent in educational institutions. ② Include the name, admission date, and graduation date of all schools attended. ③ Include any research or work experience as well. (PC can be used to complete the form.)</p>
8	Entrance Exam Fee	<p>¥30,000 Pay the fee at the post office counter with the postal deposit form specified by OCU. <Except for applicants who fall under 11. Notes of Importance (3) on page 24, entrance examination fees will not be returned once they have been paid.></p>

Note: For documents written in languages other than Japanese or English, the applicant must also submit a translation certified by an official institution (such as the applicant's university, Japanese language school, or embassy). The student's own signature or personal stamp is not acceptable.

(2) Documents necessary for each graduate school

Designated forms besides application documents, for each graduate school, can be downloaded from OCU Web. (Please print on a single-sided A4 white paper.)

[OCU Web site <http://www.osaka-cu.ac.jp/ja/admissions/graduate/ishorui>]

* Letters of recommendation from the applicant's alma mater are not required for the Graduate School of Economics and the Graduate School of Literature and Human Sciences.

《Graduate School of Business》

A	Motivation & Research Plan	Write reason for applying and research plan on the forms specified by the Graduate School of Business and submit with the application. (PC can be used to complete the form.)
B	Letter of Recommendation	Letters of recommendation must be written and placed in a sealed envelope by the dean of the university, dean of the faculty, dean of the graduate school, or academic supervisor of the student at their most recent (current) university. (PC can be used to complete the form.)

《Graduate School of Economics》

A	Motivation & Research Plan	Make a cover page by using the form specified by the Graduate School of Economics or by writing what is written inside the thick-frame in the form specified by the Graduate School of Economics, write the research plan on an A4 paper (portrait layout, horizontal text) and submit one original. (PC can be used to complete the form.)
---	----------------------------	--

《Graduate School of Literature and Human Sciences》

A	<p>Research Plan (All Applicants)</p>	<p>Summarize what the applicant has researched and what they wish to research in the field of expertise of their desired in approximately 4,000 characters <u>written in Japanese</u>. Write in horizontal text on A4 paper (portrait layout) on a computer (handwritten is also acceptable). Format including characters per line and lines per page, as well as composition of the text may be determined by the applicant.</p>
<p>* If unable to submit a research plan document at the time of application, the deadline for this document may be extended by the following process.</p> <p>① Write the required items on the Required Items Form of the Graduate School of Literature and Human Sciences.</p> <p>② Send this to the office in charge of the Graduate School of Literature and Human Sciences in the Student Support Center (Postmarked no later than August 14th, 2018 (Tuesday)) or Deliver in person to the office in charge of the Graduate School of Literature and Human Sciences in the Student Support Center (no later than 17:00 on August 14th, 2018 (Tuesday)).</p> <p>(If sending by mail, write “Research Plan Document Inside” in red ink on the envelope, and be certain to send it by special registered express mail addressed to the “Office in Charge of Graduate School of Literature and Human Sciences”.)</p>		
B	<p>Required Information Form of the Graduate School of Literature and Human Sciences (All applicants)</p>	<p>Submit using the form specified by the Graduate School of Literature and Human Sciences.</p>
C	<p>Graduation Thesis (Copy) (Only for students that have graduated from a university or faculty that requires a graduation thesis)</p>	<p>Submit a copy of the graduation thesis submitted to the applicant’s alma mater. Attach a “Certificate Authenticating Accuracy of the Graduation Thesis” (Any format). If the graduation thesis is not written in Japanese, the applicant must attach a summary they have written in Japanese. The summary shall be 2,000 characters or less, on A4 paper (portrait layout) written on a computer in horizontal text (handwritten is also acceptable). Format including characters per line and lines per page may be determined by the applicant.</p>
D	<p>Essays showing research results other than A or C (Copy) (Voluntary)</p>	<p>If the applicant has an essay or the like that shows research results in the field of expertise in their desired department other than A or C (research plan and copy of graduation thesis), submit a copy of this document as well. It may be written in a foreign language.</p>

《Graduate School of Science》

A	<p>Letter of Recommendation (All applicants)</p>	<p>Written and placed in a sealed envelope by the dean, head of the faculty, head of the graduate school, or advisor of the student’s most recent alma mater (or the school they are currently enrolled in). (PC can be used to complete the form.)</p>
B	<p>TOEIC Official Certification (Original) (*) (Only applicants applying to the Department of Molecular Materials Science)</p>	<p>Scores from TOEIC tests held between July 1st, 2016 and August 4th, 2016 or TOEIC Listening & Reading Tests held between August 5th, 2016 and June 30th, 2018 are acceptable. If the applicant has taken the test multiple times, they must select one to submit at the time of application. <u>Scores from the special group test system (IP Test) are not acceptable.</u> <u>Once a TOEIC Official Certification (Original) has been submitted, it may not be changed, and it will not be returned to the applicant.</u></p>

* If unable to submit a “TOEIC Official Certification (Original)” at the time of application, the deadline for this document may be extended by the following process.

- ① Write the reason on a request form (A4 paper, any format) and enclose this at the time of application.
- ② Submit the TOEIC Official Certification (Original) by either of the following means
Send it to the office in charge of the Graduate School of Science in the Student Support Center (See the back cover) (Postmarked no later than July 31st, 2018 (Tuesday)) or
Deliver in person to the office in charge of the Graduate School of Science in the Student Support Center (no later than 17:00 on July 31st, 2018 (Tuesday)).

(If sending by mail, write “TOEIC Official Certification Inside” in red ink on the envelope, and be certain to send it by **special registered express mail** addressed to the “Office in Charge of Graduate School of Science”.)

(*) Will not be acceptable without a picture. If the TOEIC Official Certification (Original) submitted is found to be invalid, then admission may be cancelled even after an applicant has received admission approval.

《Graduate School of Engineering》

A	Letter of Recommendation	Written by the dean, head of the faculty, head of the graduate school, or advisor of the student’s most recent alma mater (or the school they are currently enrolled in) and received in a sealed envelope. (Applicants who have graduated or expect to graduate from the OCU Faculty of Engineering are not required to submit this.) (PC can be used to complete the form.)
B	TOEIC Official Certification (Original) (*)	Scores from TOEIC tests held between July 1 st , 2016 and August 4 th , 2016 or TOEIC Listening & Reading Tests held between August 5 th , 2016 and June 30 th , 2018 are acceptable. If the applicant has taken the test multiple times, they must select one to submit at the time of application. <u>Scores from the special group test system (IP Test) are not acceptable.</u> <u>Once a TOEIC Official Certification (Original) has been submitted, it may not be changed, and it will not be returned to the applicant after.</u>

*If unable to submit a “TOEIC Official Certification (Original)” at the time of application, the deadline for this document may be extended by the following process.

- ① Write the reason on a request form (A4 paper, any format) and enclose this at the time of application.
- ② Submit the TOEIC Official Certification (Original) by either of the following means
Send it to the office in charge of the Graduate School of Engineering in the Student Support Center (See the back cover) (Postmarked no later than July 31st, 2018 (Tuesday)) or
Deliver in person to the office in charge of the Graduate School of Engineering in the Student Support Center (no later than 17:00 on July 31st, 2018 (Tuesday)).

(If sending by mail, write “TOEIC Official Certification Inside” in red ink on the envelope, and be certain to send it by **special registered express mail** addressed to the “Office in Charge of Graduate School of Engineering”.)

(*) Will not be acceptable without a picture. If the TOEIC Official Certification (Original) submitted is found to be invalid, then admission may be cancelled even after an applicant has received admission approval.

《Graduate School of Human Life Science》

A	Letter of Recommendation	Written and placed in a sealed envelope by the dean, head of the faculty, head of the graduate school, or advisor of the student’s most recent alma mater (or the school they are currently enrolled in).
----------	---------------------------------	---

5. Submitting of Applications

Applicants who wish to apply will be required to pay the application fee, to arrange the application documents, and use the envelope designated by the university (if the application documents cannot fit inside, the front of the application enveloped specified by OCU may be cut out and attached to the front of a larger envelope) and sent by **registered express mail** (including EMS) to the following address. However, students enrolled at OCU (including research students, trainees etc.) may submit their application directly to the office in charge of each graduate school in the Student Support Center (Submit application documents using the application envelope specified by OCU) only 10: 00 - 17: 00 (except 12: 00 - 12: 45) during the following application period.

Application Period	Address
<p>July 20th (Friday) – July 26th (Thursday), 2018 [Must be delivered by 17:00 on the 26th] *However, applications delivered after this deadline will be accepted only in the case of “registered express mail” postmarked (in Japan) on July 25th (Wednesday) or earlier. Applicants other than students currently enrolled at OCU may also submit their application at the Admissions Office counter from 15:00 to 17:00 on the final day.</p>	<p>〒558-8585 Admissions Office Osaka City University 3-3-138 Sugimoto, Sumiyoshi-ku, Osaka-shi</p>

An “Exam Ticket” and “Notes on Taking the Exam” will be sent to applicants whose application has been accepted.

These are planned to be sent on August 9th (Thursday) so if they do not arrive within 1 week, contact the office in charge of each graduate school in the Student Support Center.

6. Selection of Applicants

Selection of applicants for admission will be made based on the grades of selective examination and application documents. The selective examination venue is at the Osaka City University Sugimoto Campus (Near JR Hanwa Line Sugimotocho Station).

Details will be announced along with the exam ticket. Be certain to bring the exam ticket to the examination.

(Selective Tests)

● Graduate School of Business

Admission Policy

<Ideal Applicant>

Based on the education policy of "Practical Learning", the Graduate School of Business seeks applicants who study actual society with great curiosity and a global perspective, who have the motivation and ability to actively contribute to the development of the economy and society, and who have a strong sense of humanity.

<Basic Policy on Selecting Applicants>

Applicants are evaluated comprehensively based on the application documents, a written exam which checks applicants' acquisition of foreign languages as well as fundamental theories of management, accounting, and industry, an oral exam which checks motivation and ability to study specialized or interdisciplinary knowledge in the master course.

*See the following for the diploma policy and curriculum policy.



<http://www.osaka-cu.ac.jp/ja/academics/graduate/business#policy>

《Department of Global Business》

This department includes 1) a "course to write a master's thesis" on the individual academic field after conducting advanced specialized research in the master course, as well as 2) an "Asian Business Research Program" to expand research and write a research paper on economics and business in Asia. Available degrees include a Master of Business Administration, Master of Commerce, and Master of Global Business, depending on units, but only a Master of Global Business can be acquired in the "Asian Business Research Program". Those who have completed the course to write a master's thesis are expected to advance to the doctoral course and become researchers in a specialized field of academia. Those who completed the "Asia Business Research Program" are expected to become active as highly skilled professionals with specialized knowledge.

Therefore, applicants who plan to advance the doctoral course should take the entrance exams in the Application Guidelines. Please note that as a general rule, students cannot go on to the doctoral course from the "Asia Business Research Program".

For the "Asian Business Research Program", please refer to the "Application Guidelines for the Asian Business Research Program".

August 29th (Wednesday)		August 30th (Thursday)
10:00 – 12:00	13:10 – 15:10	10:00 –
Written Exam	Written Exam	Oral Exam
<p>English (100 points) Answers must be written in Japanese, but hiragana and romaji are acceptable. Language dictionaries prepared by the Graduate School of business will be lent to all test takers at the time of the test. May be substituted with TOEFL iBT (See Note 2)</p>	<p>Specialized Subjects (question fields) (200 points) One question from each of the following fields will be on the exam, for a total of 10 questions. (A) Business (B) Business Information (C) Global Business (D) Finance (E) Distribution (F) Industry (G) Accounting (H) Business Analysis (I) Economics (J) Mathematics & Statistics Select 2 of the 10 questions and answer in approximately 1,000 Japanese characters. The limit on the number of characters does not apply to answers to questions from the question field "(J) Mathematics & Statistics".</p>	<p>Conducted about the applicant's answers to the written exam and their research plan. (15 minutes per person)</p>

- Note
1. Based on the results of the written test on August 29th (Wednesday), the department will conduct oral exams only for specified applicants.
These applicants will be announced at 9:30 on August 30th (Thursday) in front of the Graduate School of Business Support Office (Office on the 1st floor of the Faculty of Business Building).
 2. For the English test, the examinee may choose one of the following test methods.
 - ① Take the English written exam on the entrance examination day.
 - ② Take the TOEFL iBT (Internet-Based Test). Convert the TOEFL iBT score (120 points perfect score) to 100 full points and adopt it as the English score for the entrance examination.
 - ③ If the applicant takes both the English written exam on the entrance examination day and the TOEFL iBT, they may convert the TOEFL iBT score (full score of 120 points) to 100 full score, and select from the higher score of either the English written exam of the entrance examination or the TOEFL iBT grade as an English evaluation score for the entrance examination.
 3. If the applicant wishes to use TOEFL iBT results, they must meet all the following conditions.
 - ① The results of the Official Score Report sent to Graduate School of Business by August 22nd (Wednesday) 2018 must be valid.
 - ② The results of TOEFL iBT validated in the entrance examination shall be the results of a TOEFL iBT test taken during the year from June 1st, 2017 to May 31st, 2018 (Not the 2 years deemed valid by the TOEFL Test Secretariat.)Note that results of TOEFL PBT (Paper-Based Test) and TOEFL-ITP (for groups) are not acceptable.
 4. Candidates who wish to use the TOEFL iBT's results, please state that in your Motivation & Research Plan. If not stated, the results of TOEFL iBT cannot be used.
 5. When doing the process so that the TOEFL iBT's Official Score Report is sent to the Graduate School of Business, please use the following numbers for the DI code (Institution Code) and Department Code.
DI code: 8914 Department Code: 82

Notes on writing the application

It is not necessary to enter the exam subjects or the supervisor's name.

● Graduate School of Economics

Admission Policy

<Ideal Applicants>

Integrated Course (Integrated Master and Doctoral Course)

Applicants are accepted who have acquired the fundamental theory of economics, are interested in advanced theories and empirical research of modern economics, and at the same time have a strong sense of reality.

Master Course (Master only)

Applicants are accepted who are motivated to tackle problems in various fields of society while having an interest in economics.

<Basic Policy on Selecting Applicants>

Integrated Course (potentially Integrated Master and Doctoral Course)

The graduate school checks the applicant's basic Japanese ability with the Japanese proficiency test certificate, English reading ability/expressive ability and degree of mastery of economics in the written exam, and the adequacy of their 'research plan' and ability to communicate in Japanese in the oral examination, which are evaluated comprehensively in conjunction with their grades in the undergraduate course.

Master Course (Master only)

The graduate school checks the applicant's basic Japanese ability with the Japanese proficiency test certificate, degree of mastery of economics in the written exam, and the adequacy of their 'research plan' and aspirations after completion in the oral examination, which are evaluated comprehensively in conjunction with their grades in the undergraduate course.

* See the following for the diploma policy and curriculum policy.



<http://www.osaka-cu.ac.jp/ja/academics/graduate/economics#policy>

《Department of Modern Economics》

The Graduate School of Economics offers two master courses: the "Integrated Course" with the purpose of preparing a master thesis aimed at advancing to the doctoral course or to fruition of the academic outcomes in long-term occupational experience or life-work and the "Master only course" aimed at training personnel who are active in various fields of society by acquiring knowledge of modern economics. Applicants who wish to proceed to the doctoral course should take the "Integrated Course".

○ Integrated Course

August 30 th (Thursday)		August 31 st (Friday)
10:50 – 11:50	13:00 – 14:30	14:00 –
Written Exam	Written Exam	Oral Exam
<p>English 2 dictionaries (1 native language and English and 1 Japanese and English) can be brought in to the exam. However, economic terminology dictionaries, electronic dictionary, etc. are not acceptable. Answers should be written in Japanese unless you wish to do so in English. Alternative by TOEIC or TOEFL is possible. (Please see Note 3 below.)</p>	<p>Specialized Subjects Economic Theory 1 (Political Economy 1), Economic Theory 2 (Political Economy 2), Economic Theory 3 (Modern Economics 1), Economic Theory 4 (Modern Economics 2), Econometrics, Economic History, Economic Policy, International Economics</p> <p>Select one question from the above 8 questions at the examination place. Although questions are written in Japanese, you may answer them in English.</p>	<p>The oral exam will be conducted in Japanese regarding the applicant's research plan and etc. (15 minutes per person.)</p>

Note 1: Oral exams will be conducted only for applicants who have been designated according to the results of the written examination on August 30th (Thursday).

These applicants will be announced at 13:30 on August 31st (Friday) in front of the elevator of the 1st floor of the Faculty of Economics Building.

2: Please refer to the following site for professors' contact information for advance consultations. When sending an e-mail to a faculty member, write "Advance Consultation for Graduate School Entrance Examinations" in the subject field.

[URL] <http://www.econ.osaka-cu.ac.jp/gse/J/faculty/members.html>

3: Applicants who are non-native English speakers, can submit the scores from TOEIC Listening & Reading Tests or TOEFL-iBT which took place after January 1st, 2015 as an alternative to the English written test. Those who wish to do so, should enclose the official certification (original) with an application form. Another option for those applicants is to take the English written test in addition to submission of scores from TOEIC Listening & Reading Tests or TOEFL-iBT. In this case whichever is advantageous for the applicant will be adopted as the grade of the English written test.

- The official certification (original) means the “Official Score Certificate” *1 for TOEIC and Test Taker Score Report *2 for TOEFL-iBT.
- The official certification must be the one which can be submitted during the application period. (Replacement is not accepted.)
- Submission of more than two official certifications are not acceptable.
- The official certification is not returnable.
- Transcript of a group test, such as TOEIC IP Test or TOEFL-ITP is invalid.

*1 The “OFFICIAL SCORE CERTIFICATE” is acceptable if it is the official certificate within the period written above.

*2 The “Examinee Score Report” is acceptable if it is the official certificate within the period written above.

Notes on writing the application

- ① In the “Academic Supervisor” field, write the name of the desired supervisor.
- ② In the “Desired Field of Expertise” field, write the subject taught by the desired supervisor (See “Graduate School Overview” [separate Booklet])
- ③ Write “Integrated” in the course field on the application envelope cover.

○ Master only course

August 30 th (Thursday)	August 31 st (Friday)
13:00 – 14:30	14:00 –
Written Exam	Oral Exam
<p style="text-align: center;">Specialized Subjects</p> <p>Economic Theory 1 (Political Economy 1), Economic Theory 2 (Political Economy 2), Economic Theory 3 (Modern Economics 1), Economic Theory 4 (Modern Economics 2), Econometrics, Economic History, Economic Policy, International Economics</p> <p>Select one question from the above 8 questions at the examination place. Although questions are written in Japanese, you may answer them in English.</p>	<p style="text-align: center;">The oral exam will be conducted in Japanese regarding the applicant’s research plan and etc. (15 minutes per person.)</p>

Note 1: Oral exams will be conducted only for applicants who have been designated according to the results of the written examination on August 30th (Thursday).

These applicants will be announced at 13:30 on August 31st (Friday) in front of the elevator of the 1st floor of the Faculty of Economics Building.

2: Please refer to the following site for professors’ contact information for advance consultations.

When sending an e-mail to a faculty member, write "Advance Consultation for Graduate School Entrance Examinations" in the subject field.

[URL] <http://www.econ.osaka-cu.ac.jp/gse/J/faculty/members.html>

Notes on writing the application

- ① In the “Academic Supervisor” field, write the name of the desired supervisor.
- ② In the “Desired Field of Expertise” field, write the subject taught by the desired supervisor (See “Graduate School Overview” [separate Booklet])
- ③ Write “Master only” in the course field on the application envelope cover.

● Graduate School of Law

Admission Policy

1. People with a strong interest in legal and political problems and a strong will to seek solutions
2. People who intend to consider problems arising in practical experience from a legal and political perspective
3. People who have basic knowledge essential for carrying out advanced research of Law & Political Science
4. People who have the ability logically build and develop their views and to explain and justify their opinions

* See the following for the diploma policy and curriculum policy.



<http://www.osaka-cu.ac.jp/ja/academics/graduate/law#policy/>

《Department of Law & Political Science》

August 29 th (Wednesday)	
9:00 – 12:00	14:30 –
Written Exam	Oral Exam
Select 2 subjects from the specialized test subjects in the table below. (100 points per subject, total of 200 points)	① Explanation in Japanese (Personal history and purpose of studies in Japan) ② Question and answer (Judged by pass/fail)

- Note 1:** The start time of the actual oral exam will be posted in front of the office of the 2nd floor of the Faculty of Law Building on the day of the test.
- 2:** When choosing a specialized exam subject, you must include your "subject major in graduate school".
 Applicants who intend to major in Law of International Organizations must select international law and one other subject.
- 3:** Criminology cannot be treated as a specialized subject.
- 4:** For the written exam on specialized subjects, OCU will lend a digest of Japanese law.

Specialized Exam Subjects	Sociology of Law, Japanese Legal History, Constitutional Law, Administrative law, Criminal Justice, Criminal Procedure, Criminology, Civil Law, Commercial Law (general laws of commercial codes and company laws), Civil Procedure, Insolvency Law, Labor Law, international law, Private International Law, Anglo-American Law, German Law, Asian Law (Chinese law), European Political and Diplomatic History, Political Science, History of Political Thought, International Politics, Public Administration
---------------------------	--

Notes on writing the application

- ① Please fill in "Subject major in graduate school" in 1 in Desired Field of Expertise field. As a general rule, the subjects that you can major in in the graduate school match with the above-mentioned specialized examination subject names.
 Law of International Organization is not mentioned in the above expert examination subject name, but it can be selected as a major course.
- ② In the examination subject field "specialization", write the specialized examination subject name (2 subjects) to take the examination.
- ③ Write the name of the academic supervisor after advance consultation with the supervisor.

● Graduate School of Literature and Human Sciences

Admission Policy

<Ideal Applicant>

People who have clear problem awareness and specialized knowledge concerning their specialized field in Human Sciences and Behavioral Science

People who wish to pursue research in a specialized field of human sciences or behavioral science based on their work experience

<Basic Policy on Selecting Applicants>

The graduate school checks Japanese basic ability with the certificate of Japanese language ability, degree of reading/expression ability of a foreign language and mastery of a specialized subject in the written exam, and the suitability of the research plan submitted and the degree of accomplishment of the graduation thesis in the oral exam, which are evaluated comprehensively in conjunction with the applicant's grades in their undergraduate program.

* See the following for the diploma policy and curriculum policy.



<http://www.osaka-cu.ac.jp/ja/academics/graduate/literature#policy>

《 Department of Philosophy & History 》

Date/Time Specialized Field	September 4 th Tuesday		September 5 th (Wednesday)
	10:30~12:00	13:30~16:30	13:30~
	Written Exam Foreign Language (100 points)	Written Exam Specialized Subject (200 points) (question fields)	Oral Exam (100 points)
Philosophy	Japanese Language *Questions made separately for each specialized field.	Basic Philosophy & History of Western Philosophy	The oral exam is conducted separately by specialized field about the written exam and the essay submitted (Approximately 30 minutes per person.)
Japanese History		Japanese History	
Asian History		Asian History	
Western History		Western History	

* Questions may appear that test the applicant's foreign language reading ability as part of the specialized subject for each specialized field.

Notes on writing the application

See the "Graduate School of Literature and Human Sciences Admission Application Example and Important Notes".

《 Department of Human Behavioral Science 》

Date/Time Specialized Field	September 4 th (Tuesday)		September 5 th (Wednesday)
	10:30 - 12:00	13:30 - 16:30	13:30 -
	Written Exam Foreign Language (100 points)	Written Exam Specialized Subject (200 points) (questions field)	Oral Exam (100 points)
Sociology	Japanese Language *Questions made separately for each specialized field.	Basic Sociology and Sociology Research Methodology (including survey methodology)	The oral exam is conducted separately by specialized field about the written exam and the essay submitted (Approximately 30 minutes per person.)
Psychology		Basic Psychology and Psychology Research Methodology	
Education		Basic Education and Education Research Methodology	
Geography		Geography	

* Questions may appear that test the applicant's foreign language reading ability as part of the specialized subject for each specialized field.

Notes on writing the application

See the “Graduate School of Literature and Human Sciences Admission Application Example and Important Notes”.

《Department of Language & Culture》

Date/Time Specialized Field	September 4 th (Tuesday)		September 5 th (Wednesday)
	10:30 - 12:00	13:30 - 16:30	13:30 -
	Written Exam	Written Exam	Oral Exam (100 points)
	Foreign Language (100 points)	Specialized Subject (200 points) (questions field)	
Japanese Language & Literature	Japanese Language *Questions made separately for each specialized field.	Japanese Literature, Japanese Linguistics	The oral exam is conducted separately by specialized field about the written exam and the essay submitted (Approximately 30 minutes per person.)
Chinese Linguistics & Sinology		Chinese Literature, Chinese Linguistics, Chinese Culture	
English and American Language & Literature		English and American Language Literature, English Linguistics, English and American Culture	
German and French Language & Literature		German Literature, German Linguistics, German Culture French Literature, French Linguistics, French Culture **	
Applied Linguistics		Linguistics Applied (Theoretical Linguistics, Applied Linguistics, Comparative Linguistics, Linguistics Education, etc.)	
Culture as Representation		Culture and Representation (Theory of Culture, Theory of Culture as Representation, Theory of Culture as Symbolism, Theory of Comparative Representation, etc.)	

* Questions may appear that test the applicant’s foreign language reading ability as part of the specialized subject for each specialized field.

** If majoring in German Language & Literature, select German Literature, German Language, and German Culture. If majoring in French Language & Literature, select French Literature, French Language, French Culture

Notes on writing the application

See the “Graduate School of Literature and Human Sciences Admission Application Example and Important Notes”.

《Department of Asian Culture & Urbanism》

Date/Time	September 4 th (Tuesday)		September 5 th (Wednesday)
	10:30 - 12:00	13:30 - 16:30	13:30 -
Specialized Field	Written Exam	Written Exam	Oral Exam (100 points)
	Foreign Language (100 points)	Specialized Subject (200 points) (questions field)	
Asian Culture & Urbanism	Japanese	Asian Culture & Urbanism (Basic problems concerning Asian cities and culture)	The oral exam is conducted about the written exam and the essay submitted (Approximately 30 minutes per person.)

* Questions may appear that test the applicant's foreign language reading ability as part of the specialized subject.

Notes on writing the application	See the “Graduate School of Literature and Human Sciences Admission Application Example and Important Notes”.
---	---

● Graduate School of Science

Admission Policy

The Graduate School of Science seeks people who have basic academic abilities in a specialized field in the natural sciences, who seek to elucidate and understand the providence of nature, and who promote research from basic scientific, interdisciplinary, and applied perspectives.

* See the following URL for the diploma policy, curriculum policy, and admission policy of each department.



<http://www.osaka-cu.ac.jp/ja/academics/graduate/science#policy>

《Department of Mathematics & Physics》

August 29 th (Wednesday)	August 30 th (Thursday)
9:30 - 12:00	10:00 -
Written Exam	Oral Exam
English and specialized subject (The applicant may be given another test if English is deemed to be their native language.)	The oral exam is conducted to assess the applicant's degree of mastery of their specialized subject and the Japanese language.

Notes on writing the application

- ① In the “Desired Specialized Field” field sections 1 to 3, select a field from each specialized field and write the course numbers and specialized field names in the applicant's order of preference. (Please refer to the ‘Graduate School Overview’ for the research content of the specialized field.)

Course Number	Course Name	Specilized Field
A 1	Mathematical Structures Theories	Algebraic Systems, Representation Theory, Manifold Theory, Topology
A 2	Mathematical Analysis	Probability Theory, Applied Mathematics, Partial Differential Equations, Differential Geometry, Real/Complex Analysis
A 3	Fundamental Physics (Theory)	Elementary Particle Theory, Nuclear Theory, Astrophysics, Mathematical Physics
A 4	Astroparticle and High Energy Physics (Experiment)	Cosmic Ray Physics, High Energy Physics, Astro/Elementary Particle Experimental, Mathematical Physics
A 5	Condensed Matter Physics	Ultra Low Temperature Physics (Experiment), Optical Physics (Experiment), Biological/Structural Physics (Experiment), Elementary Excitation Physics (Theory), Electron Correlation Physics (Theory), Laser Quantum Physics (Experiment)

- ② It is not necessary to fill in the “Exam Subject” field.
 ③ Please fill in the “Academic Supervisor Name” field after advance consultation with the supervisor(s).

《Department of Molecular Materials Science》

August 29 th (Wednesday)	August 30 th (Thursday)
9:30 - 12:00	10:00 -
Written Exam	Oral Exam
Specialized Subject	The oral exam is conducted to assess the applicant's degree of mastery of their specialized subject and the Japanese language.

* Foreign language (English) ability is evaluated from TOEIC Test or TOEIC Listening & Reading Test scores.

Notes on writing the application

- ② It is not necessary to fill in the “Desired Specialized Field” or “Exam Subject” fields.
 ③ Please fill in the “Academic Supervisor Name” field after advance consultation with the supervisor(s).

《Department of Biology & Geosciences》

August 29 th (Wednesday)	August 30 th (Thursday)
13:30 - 15:00	10:00 -
Written Exam	Oral Exam
English and specialized subject (The applicant may be given another test if English is deemed to be their native language.)	The oral exam is conducted to assess the applicant's degree of mastery of their specialized subject and the Japanese language.

Notes on writing the application

- ① In the “Desired Specialized Field” field sections 1 to 3, select a field from each specialized field and write the course numbers and specialized field names in the applicant’s order of preference. (Please refer to the Graduate School Overview for the research content of the specialized field.)

Course Number	Course Name	Specialized Field
C 1	Science of Biomolecules	Functional Metabolic Regulation Science, Functional Biological Low Molecule Science, Functional Biopolymer Science
C 2	Functional Biosciences	Functional Animal Biology, Functional Plant Biology, Functional Cellular Biology
C 3	Functional Biology of Natural History	Functional Animal Ecology, Functional Plant Ecology, Informatic Biology, Plant Evolution and Adaptation
C 4	Environmental Geoscience	Anthropogenic Natural Science, Urban Soil Structural Science, Geological Informatics
C 5	Evolution of Lithosphere, Hydrosphere, and Biosphere	Geophysics, Petrology, Geohistory

- ② It is not necessary to fill in the “Exam Subject” field.
- ③ Please fill in the “Academic Supervisor Name” field after advance consultation with the supervisor(s).

● Graduate School of Engineering

Admission Policy

The Graduate School of Engineering accepts students widely from Japan and abroad who have a strong sense of ethics and responsibility to society, willingness to innovate technology in creative ways, and strong curiosity in order to realize a sustainable society by combining conservation of the global environment and new technologies.

Specifically, this graduate school seeks applicants with one or more of the following qualifications and abilities.

- (1) Elements to orient their expertise in the field of engineering while broadly acquiring knowledge and skills in advanced engineering fields
- (2) Elements necessary to learn fundamentals in fields other than engineering and make use of that in the field of engineering
- (3) Logical thinking ability, design ability, and communication skill necessary to acquire research ability required for writing a master's thesis

* Please refer to the following for the diploma policy, curriculum policy, admission policy by major and basic policy of applicant selection.



<http://www.osaka-cu.ac.jp/ja/academics/graduate/engineering#policy>

《Department of Mechanical & Physical Engineering》

August 20 th (Monday)		August 21 st (Tuesday)
10:00 - 12:00	13:30 - 16:30	10:00 -
Written Exam	Written Exam	Oral Exam
Basic Subjects	Specialized Subjects	
Fundamental Mathematics, General Dynamics (100 points per subject, 200 points total)	Select 3 subjects from Material Dynamics, Thermodynamics, Fluid Dynamics, Mechanical Dynamics, Control Engineering, Materials Engineering, Materials Science 3 subjects selection (100 points per subject, 300 points total)	The oral exam will be conducted about the specialized field of the applicant's choice. (50 points)

* Foreign language (English) ability is evaluated based on TOEIC score (200 points).

* If the applicant does not take any one of these tests, they will be rejected.

* Question scope keywords for each exam subject

1. Basic Subjects:

Fundamental
Mathematics:

Linear algebra (determinant, basis, eigenvalue), calculus (extreme value problems, implicit function theorem, inverse function theorem, multiple integrals/successive integrals, area of a curved surface)

General Dynamics:

Dynamics of mass points, dynamics of mass point systems, dynamics of rigid bodies

2. Specialized Subjects:

Material Dynamics:

Stress and strain, tension and compression, thermal stress, beam bending, twisting, combined stress, strain energy

Thermodynamics:

First and second laws of thermodynamics, general equations of thermodynamics, ideal gases, gas cycle, steam cycle

Fluid Dynamics:

Hydrostatic pressure, continuous equations, Bernoulli's theorem, law of momentum, flow in a pipe, flow of complete fluid, basis of viscous flow

Mechanical Dynamics:

Vibration of one degree of freedom system, vibration of multi-degree of freedom system

Control Engineering:

Continuous systems, discrete systems, transfer functions, time response, frequency response, stability determination, phase compensation, PID control

Materials Engineering:

Organization and mechanical properties, state diagrams, lattice defects, heat treatment, processing methods

Material Science:

Structure of matter, chemical bond, electronic structure, lattice vibration, diffraction phenomenon

Notes on writing the application

- ① In the “Desired Specialized Field” field sections 1 to 3, write the specialized field number and specialized field name written in the “Graduate School Overview” [Separate Booklet] in the applicant’s order of preference.
- ② It is not necessary to fill in the “Exam Subject” field.
- ③ Correspondence of the subject selected for the desired specialized field and the subject selected for specialized subject is not important.
- ④ Applicants may not be able to pass for their desired specialized field depending on supervisor’s acceptable number of students.
- ⑤ Please fill out the “Academic Supervisor Name” field after advance consultation with a faculty.

《Department of Physical Electronics & Informatics》

Class \ Subject	August 20 th (Monday)		August 21 st (Tuesday)
	9:00 - 12:00	13:30 - 16:30	13:00 -
	Written Exam	Written Exam	Oral Exam
	Basic Subjects (200 points)	Specialized Subjects (200 points)	(50 points)
Class 1 (Electronic & Physical) Power Electronics Material Measurement engineering Optical Properties Engineering Physical Property Control Engineering Wave Physical Engineering Applied Spectroscopic Measurement Nanomaterials Engineering Mathematical Engineering	Electromagnetics (Class 1), Select 3 courses from Electrical Circuits (Class 1), Statistical Mechanics, Applied Mathematics	2 subjects selected from Solid Physics, Semiconductor Engineering, Quantum Mechanics, Quantum Statistical Mechanics, Electronic Circuits	The oral exam will be conducted about the specialized field. (10 minutes per person)
Class 2 (Electric & Information) Optoelectronics Electromagnetic Device Engineering Smart Energy Engineering Electric Information System engineering Information Processing Engineering Knowledge Information Processing Engineering Information Network Engineering Multimedia Engineering Communication System Engineering System Control Engineering Distributed Systems Engineering Information Infrastructure Engineering Knowledge & Information Systems Engineering Spatial Information Engineering	Electromagnetism (Class 2), Select 3 courses from Electrical Circuits (Class 2), Statistical Mechanics, Applied Mathematics	Answer both Electric Information I and Electric information II. Problems related to electronics, information communication, information processing	

* Foreign language (English) ability will be evaluated from the applicant’s TOEIC score **(100 points)**.

* The applicant will fail if there are any subjects they do not meet a certain standard for.

**Notes on writing
the application**

- ① In the “Desired Specialized Field” field sections 1 to 3, write the specialized field number and specialized field name written in the “Graduate School Overview” [Separate Booklet] in the applicant’s order of preference. Applicants may not request specialized field with different numbers simultaneously.
- ② In both “Basic” field 1 and “Specialized” field 1 of the exam subject field, write the class that your desired specialized field belongs to (that is either Class 1 or Class 2). Write the same class in both the “Basic” field and “Specialized” field.
- ③ Applicants may not be able to pass for their desired specialized field depending on the number of students a supervisor can accept.
- ④ Please fill in the “Academic Supervisor Name” field after advance consultation with the supervisor.

《Department of Applied Chemistry & Bioengineering》

August 20 th (Monday)	August 21 st (Tuesday)
13:30 - 17:00	13:00 -
Written Exam	Oral Exam
Specialized subjects concerning applied chemistry and bioengineering (50 points)	The oral exam will be conducted about specialized subjects and the applicant’s mastery of the Japanese language. (20 minutes per person) (100 points)

**Notes on writing
the application**

- ① Foreign language (English) ability will be evaluated from the applicant’s TOEIC score **(50 points)**.
- ② In the “Desired Specialized Field” field sections 1 and 2, write the specialized field number and specialized field name written in the “Graduate School Overview” [Separate Booklet] in the applicant’s order of preference. Applicants are not necessarily accepted to the field of their choice.
- ③ It is not necessary to fill in the “exam subject” field.
- ④ Please fill in the “Academic Supervisor Name” field after advance consultation with the supervisor.

《Department of Urban Engineering》

August 20 th (Monday)		August 21 st (Tuesday)																																		
9:00 - 12:00	13:30 - 16:30	13:00 -																																		
Written Exam	Written Exam	Oral Exam																																		
Basic Subject	Specialized Subject	<p>Bring either a summary of the graduation research (A4 paper 1 page: 10 copies) or the deliverables of design exercises, according to the direction for the applicant's desired specialized field.</p> <p>The oral exam will be conducted based on this (100 points).</p> <p>(10 minutes per person)</p>																																		
Select 1 of the following 2 subjects (200 points) .	Select 1 subject from the following 16 subjects corresponding to the applicant's desired research field (300 points) .																																			
<ul style="list-style-type: none"> ● Basic Architecture ● Basic Urbanism 	<table border="1"> <thead> <tr> <th>Specilized Field #</th> <th>Research Theme Name</th> </tr> </thead> <tbody> <tr><td>1</td><td>Architectural Planning and Architectural Construction</td></tr> <tr><td>2</td><td>Architectural Design and Architectural History</td></tr> <tr><td>3</td><td>Urban Environmental Planning</td></tr> <tr><td>4</td><td>Urban Infrastructure Planning</td></tr> <tr><td>5</td><td>Architectural Environmental Planning</td></tr> <tr><td>6</td><td>Environmental Planning Science</td></tr> <tr><td>7</td><td>Local Environmental Planning</td></tr> <tr><td>8</td><td>Environmental Ecological Engineering</td></tr> <tr><td>9</td><td>Urban Recycle Engineering</td></tr> <tr><td>10</td><td>Disaster Prevention for Architecture and Wind Engineering</td></tr> <tr><td>11</td><td>Structural Engineering for Architecture</td></tr> <tr><td>12</td><td>Structural and Bridge Engineering</td></tr> <tr><td>13</td><td>Geotechnical Engineering</td></tr> <tr><td>14</td><td>Estuarine & Coastal Ecosystem Engineering</td></tr> <tr><td>15</td><td>Environmental Chemistry</td></tr> <tr><td>16</td><td>Spatial Information Science</td></tr> </tbody> </table>		Specilized Field #	Research Theme Name	1	Architectural Planning and Architectural Construction	2	Architectural Design and Architectural History	3	Urban Environmental Planning	4	Urban Infrastructure Planning	5	Architectural Environmental Planning	6	Environmental Planning Science	7	Local Environmental Planning	8	Environmental Ecological Engineering	9	Urban Recycle Engineering	10	Disaster Prevention for Architecture and Wind Engineering	11	Structural Engineering for Architecture	12	Structural and Bridge Engineering	13	Geotechnical Engineering	14	Estuarine & Coastal Ecosystem Engineering	15	Environmental Chemistry	16	Spatial Information Science
Specilized Field #	Research Theme Name																																			
1	Architectural Planning and Architectural Construction																																			
2	Architectural Design and Architectural History																																			
3	Urban Environmental Planning																																			
4	Urban Infrastructure Planning																																			
5	Architectural Environmental Planning																																			
6	Environmental Planning Science																																			
7	Local Environmental Planning																																			
8	Environmental Ecological Engineering																																			
9	Urban Recycle Engineering																																			
10	Disaster Prevention for Architecture and Wind Engineering																																			
11	Structural Engineering for Architecture																																			
12	Structural and Bridge Engineering																																			
13	Geotechnical Engineering																																			
14	Estuarine & Coastal Ecosystem Engineering																																			
15	Environmental Chemistry																																			
16	Spatial Information Science																																			

* Foreign language (English) ability is evaluated according to TOEIC score (100 points). This graduate school also has certain acceptance criteria for the written exam and oral exam.

* Basic Architecture: Questions on issues related to architectural planning/construction method, architectural design/architectural history, construction environmental engineering, architectural structural studies, and building materials science.

* Basic Urbanism: Select 7 problems from nine options including urban history, planning theory, urban planning, environmental metrology, urban energy engineering, environmental ecology, structural dynamics I, soil dynamics I, and hydraulics provided by the Urbanism Department.

Notes on writing the application

- ① In the “Desired Specialized Field” field sections 1 and 2 (or only 1 if the applicant wants only their first choice), write the specialized field number and specialized field name written in the “Graduate School Overview” [Separate Booklet] in the applicant’s order of preference. Upper limits are set for the number of students who may receive guidance for each specialized field. See the “Graduate School Overview” [Separate Booklet] for details.
- ② Write 1 selected basic subject in the Exam Subject “Basic” field.
- ③ Select and write only a specialized subject that corresponds to the applicant’s first preference for the specialized field in the Exam Subject “Specialized” field.
- ④ Please fill in the “Academic Supervisor Name” field after advance consultation with the supervisor.

*If you have any questions, complete the application form after consulting with the office in charge of the Graduate School of Engineering in the Student Support Center.

● Graduate School of Human Life Science

Admission Policy

See the following URL for admission policy, diploma policy, and curriculum policy.

<http://www.osaka-cu.ac.jp/ja/academics/graduate/humanlife#policy>



Applicants must refer to the “Graduate School Overview” [Separate Booklet] and consult with the instructor of their desired specialized subject by July 5th, 2018 (Thursday). Inquire with the office in charge of the Graduate School of Human Life Science in the Student Support Center for the contact information of the instructor in charge of your desired specialized subject (see the back cover).

《Department of Human Life Science》

Date and Time	August 28 th (Tuesday)			August 29 th (Wednesday)
	10:00 - 11:30	12:30 - 14:00	14:30 - 16:00	10:00 -
	Written Exam			Oral Exam
Course of Study	<Specializations>	<Foreign Language>	<Fundamentals>	
Food and Human Health Sciences	<p>Select 1 specialized subject desired</p> <div style="border: 1px solid black; padding: 5px;"> Food Science Nutritional Medicine Public Health Nutrition Bioenergetics Informatics Pathophysiology Clinical Nutrition School Lunch Management & Administration Biochemistry Food Hygiene Science Molecular Cell Biology Food Immunology Applied Nutrition </div>	<p>English (Only the English-Japanese dictionary prepared by this graduate school may be used)</p>	<p>Select 1 subject from the following 4 subjects</p> <div style="border: 1px solid black; padding: 5px;"> Chemistry Biochemistry Anatomy & Physiology Biology </div>	<p>The oral exam will be conducted about the specialization of the applicant's choice. (10 minutes per person.)</p>
Housing and Environmental Design	<p>Select 1 specialized subject desired</p> <div style="border: 1px solid black; padding: 5px;"> Dwelling Life Science Cultural History of Housing Housing Space Design Technology of Well-Living Planning Theory of Anthropology of Dwellings Housing Ergonomics Environmental Engineering in Architecture Architectural Fixtures Residential Space Design Environmental Materials Sensitivity Science Housing Construction Method City Planning Inhabitation System Environmental Safety Engineering & Ergonomics </div>	<p>English (Only the English-Japanese dictionary prepared by this graduate school may be used)</p>	<p>Select 3 subjects from the following 15 subjects</p> <div style="border: 1px solid black; padding: 5px;"> Housing Science Housing Project and Management Housing Culture History Housing Planning Housing Design Urban Planning Housing Welfare Planning Ergonomics Disaster Safety Housing & Environment Engineering Housing Behavioral Science Architectural Fixtures Structural Mechanics Architectural Materials Architecture General Structures </div>	<p>The oral exam will be conducted about the specialization of the applicant's choice. (10 minutes per person.)</p>

Social Services	<p>Select 1 specialized subject desired</p> <div style="border: 1px solid black; padding: 5px;"> Social Welfare Welfare Policy Studies Social Development Welfare System Educational Clinical Community Welfare Family Sociology Social Policy Advanced Interdisciplinary Care Science </div>	English (Only the English-Japanese dictionary prepared by this graduate school may be used)	<p>The following 1 subject is mandatory</p> <div style="border: 1px solid black; padding: 5px;"> Welfare Fundamentals 1 (Problems on Sociology, Psychology, Education Studies, Economics, and Social Welfare) </div>	The oral exam will be conducted about the specialization of the applicant's choice. (10 minutes per person.)
Clinical Psychology	<p>Select 1 specialized subject desired</p> <div style="border: 1px solid black; padding: 5px;"> Clinical Psychology Developmental Clinical Psychology Perinatal Clinical Psychology </div>	English (Only the English-Japanese dictionary prepared by this graduate school may be used)	<p>The following 1 subject is mandatory</p> <div style="border: 1px solid black; padding: 5px;"> Psychology </div>	<p>The oral exam will be conducted about the specialization of the applicant's choice. (10 minutes per person.)</p> <p>◎The oral exam on the 28th (Tuesday) will only be conducted for applicants designated according to the results of the written exam. These applicants will be announced on the 29th (Wednesday) at 9:00 at the Faculty of Human Life Science Building and the website of the Osaka City University Admissions Office.</p>

* Pass/fail judgment will be conducted comprehensively, including oral examinations, from among those applicants with over 40% in each subject (perfect score 100) and over 60% for total subjects.

Notes on writing the application

Please fill in the following according to ① ~ ④ below and ⑤ of each course.

[Common to All Courses]

- ① Write "Human Life Science" in the "Desired Department" column.
- ② Write the course name you wish to apply for in 1 and the specialized subject of the desired academic supervisor in 2 in the "Desired Specialized Field".
* For the specialized subject of each faculty member, please refer to "Graduate School Overview" [Separate Booklet].
- ③ Write the same specialized subject as ② above from the Written Exam <Specialized> column in 1 of the Exam Subject "Specialization" field.
- ④ It is not necessary to fill in the Exam Subject "Foreign Language" field.

[Food and Health Science Course]

- ⑤ Please fill in one subject from the <Fundamentals> of the Food and Human Health Science Course in 1 of the Entrance Exam "Fundamentals" field.

[Housing and Environmental Design]

- ⑤ Please select and fill in 3 subjects from the <Fundamentals> of the Housing and Environment Course in the Entrance Exam "Fundamentals" field.

(Write two subjects in 1 and 1 subject in 2 in the "Fundamentals" column, in no particular order.)

[Social Services Course]

- ⑤ It is not necessary to fill out the Entrance Exam "Fundamentals" field.

[Clinical Psychology Course]

- ⑤ It is not necessary to fill out the Entrance Exam "Fundamentals" field.

7. Applicants who desire special consideration when taking exams or studying

Applicants who desire special consideration when taking exams or studying at OCU for reasons such as having a disability, please consult with the office in charge of the graduate school you apply for by July 5th, 2018 (Thursday).

The university will respond to requests received after July 6th, 2018 (Friday) as much as possible as well, but please apply by July 5th (Thursday) if at all possible.

8. Announcement of Application Results

(1) Announcement of Application Results

Successful applicants will be announced on notice boards and the university website.

Graduate School	Date and Time (notice board/website)	Place (notice board)
Graduate School of Business	September 14 th (Fri) 10:00 – September 20 th (Thu) 17:00	Place designated by each graduate school
Graduate School of Economics	September 14 th (Fri) 10:00 – September 20 th (Thu) 17:00	
Graduate School of Law	September 11 th (Tue) 10:00 – September 18 th (Tue) 17:00	
Graduate School of Literature and Human Sciences	September 25 th (Tue) 10:00 – October 1 st (Mon) 17:00	
Graduate School of Science	September 12 th (Wed) 10:00 – September 18 th (Tue) 17:00	
Graduate School of Engineering	September 5 th (Wed) 10:00 – September 11 th (Thu) 17:00	
Graduate School of Human Life Science	September 11 th (Tue) 10:00 – September 18 th (Tue) 17:00	

Announcement of successful applicants on the website

A list of successful applicant examination numbers will be posted on the Osaka City University entrance exam information site (<http://daigakuic.jp/ocu-in-goukaku/>). The university will not respond to any inquiries about acceptance or rejection by telephone etc., regardless of the method of announcement.

Applicants who wish to have the “List of Successful Applicant Exam Numbers” sent to them, please check the information on “Notes regarding the exam” which will come enclosed with the exam ticket.*

(2) Notification of passing the exam

On the day that successful applicants are announced, the university will distribute “Notification of passing the exam” and “Enrollment Procedures” at a place designated by each graduate school. The applicant must present their exam ticket at that time. If successful applicants cannot receive documents themselves, they must contact the administrative office of that graduate school at the Student Support Center in advance.

Applicants who passed the exam of the Graduate School of Economics or Graduate School of Literature and Human Sciences will be sent the “Notification of passing the exam” and “Enrollment Procedures” on the day that successful applicants are announced (Documents will not be delivered by hand.)

9. Enrollment Procedures

Enrollment procedures must be carried out according to the following schedules. Be aware that dates differ per graduate school.

① Graduate School of Human Life Science

Date/Time: September 28th, 2018 (Friday) 10:00-15:00 (Except 12:00 – 12:45)

Place: The location of enrollment procedures will be announced separately to successful applicants.

- ② Graduate School of Business, Graduate School of Economics, Graduate School of Law, Graduate School of Literature and Human Sciences, Graduate School of Science, Graduate School of Engineering

Date/Time: March 26th, 2019 (Tuesday) 10:00 - 15:00 (Except 12:00 – 12:45)

Place: The location of enrollment procedures will be announced separately to successful applicants.

10. Tuition Fees

Current amounts are as follows, but the amount of students enrolling in 2019 may be subject to change.

Admission Fee	Payment Classification	Osaka City residents and their children*	¥222,000
		Other applicants	¥382,000
Tuition Fee		¥535,800/year	

If tuition fees are revised while a student is enrolled, the revised fees will be applied.

- *1: “Osaka City residents and their children” are enrollees who have had an address in Osaka City themselves or in the name of their father or mother in their family registry continuously since well over a year before the enrolled day (before April 1st, 2018). They must follow the “Admission Fee Payment Classification Approval” procedures. The same conditions apply to applicants who do not have Japanese citizenship.
- *2: “Osaka City residents and their children” must obtain “Admission Fee Payment Classification Approval” by submitting an “Admission Fee Payment Classification Approval Request” and “Official documents such as certificate of residence (Issued on or after the first day of the month of the enrollment procedures)”. Be certain to check the “Admission Fee & Tuition Fee” information which is given on the day that successful applicants are announced. Enrollees who are subject to admission fee payment classification approval must pay the admission fee after receiving approval.

※Payments cannot be refunded once they have been made.

There is a system for (partial) exemption of tuition fees. The Global Exchange Office (TEL: 06-6605-3558) will announce details separately.

11. Notes of Importance

- (1) Applications cannot be cancelled once they have been accepted.
- (2) Osaka City University will not respond to inquiries on results of selective tests.
- (3) The entrance examination fee already paid will not be refunded except for the following reasons.
 - The applicant paid an entrance examination fee, but did not file an application
 - The application was not accepted because it was incomplete etc.
 - The entrance examination fee was paid in duplicate
 ※Please contact the Entrance Examination Office in the University Administrative Division within one month from the last day of the application period for the method of refund.
- (4) If it is found that false statements were made in the application form for admission or that the applicant cheated on the entrance examination, then permission may be canceled even after the admission decision is made.
- (5) Applicants in the category of 2: Applicant Qualifications (7) to (9) on page 2 who do not meet the qualification requirements stipulated by the graduate school will not be permitted for admission if even if they pass this exam.
- (6) Personal information collected during the application and exam process will be used to the extent required for the entrance exam, admission guidance, enrollment procedures, election method research, statistical data preparation, and student life-related administrative duties at Osaka City University. It will only be used for other work with consent from the applicant. Personal information gathered to the extent necessary for work will not be provided to third parties.
- (7) **A guarantor who lives in Japan is required when completing enrollment procedures.**

Past exam questions can be viewed at the administrative office of each graduate school at the Student Support Center. Contact the administrative office of each graduate school at the Student Support Center. (See page 27)

<Review of Applicant Qualifications>

See International Student Special Admission Track Applicant Qualifications (7) – (9) [See pages 1-2]

1. Applicant Qualifications Review Request Deadline

July 5th, 2018 (Thursday) [valid postmark]

2. Applicant Qualifications Review Request Address

3-3-138 Sugimoto, Sumiyoshi-ku, Osaka-shi 〒558-8585

Osaka City University, Student Support Center

Administrative Office of the Graduate School of XX

(Send to the applicant's desire graduate school [See back cover].)

3. Applicant Qualification Review Request Documents

- ① Applicant qualification review request (use form designated by Osaka City University)
- ② Proof of most recent education

Applicants requesting to be qualified to apply by ○Special Admission Track for International Students Qualification (7)	<ul style="list-style-type: none"> • Certificate of withdrawal from the applicant's most recent university (undergraduate) and enrollment certificate or (planned) completion certificate of their currently enrolled graduate school • Transcripts from the applicant's university (undergraduate) and a transcript of their currently enrolled graduate school
Applicants requesting to be qualified to apply by ○Special Admission Track for International Students Qualification (8)	<ul style="list-style-type: none"> • Transcripts • Certificate of enrollment • Recommendation letter of the supervisor (sealed)
Applicants requesting to be qualified to apply by ○Special Admission Track for International Students Qualification (9)	<ul style="list-style-type: none"> • Transcripts of the applicant's most recent graduate school • Certificate of graduation (completion) • School regulations and syllabus of the last graduate school or equivalent (a copy is acceptable)

- ③ Documents displaying work experience or academic ability (Submission may be requested)
- ④ Statement of motivation (Submission may be requested)
- ⑤ In addition, per the desire of the applicant, Osaka City University will permit the attachment of other certificates, essays, works, or other materials.

4. Applicant Qualifications Review:

According to the selection methods of each graduate school.

5. Applicant Qualifications Review Results Notification:

Notifications will be made by mail (express delivery) at least one week in advance of the application deadline.

(However, the Graduate School of Science will contact applicants separately.)

6. Applicant Qualifications Certification Validity:

Limited to the entrance exams taking place in the reference year. (Valid for the appropriate graduate school only.)

7. Applicant Qualifications Review Application Request Method

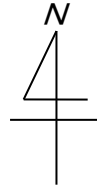
Make a request for an Applicant Qualifications Review early so that the applicant can collect necessary documents and make their application by July 5th, 2018 (Thursday) [Valid postmark]

*In regard to the Graduate School of Engineering, please ask the office in the Graduate School of Engineering in advance.

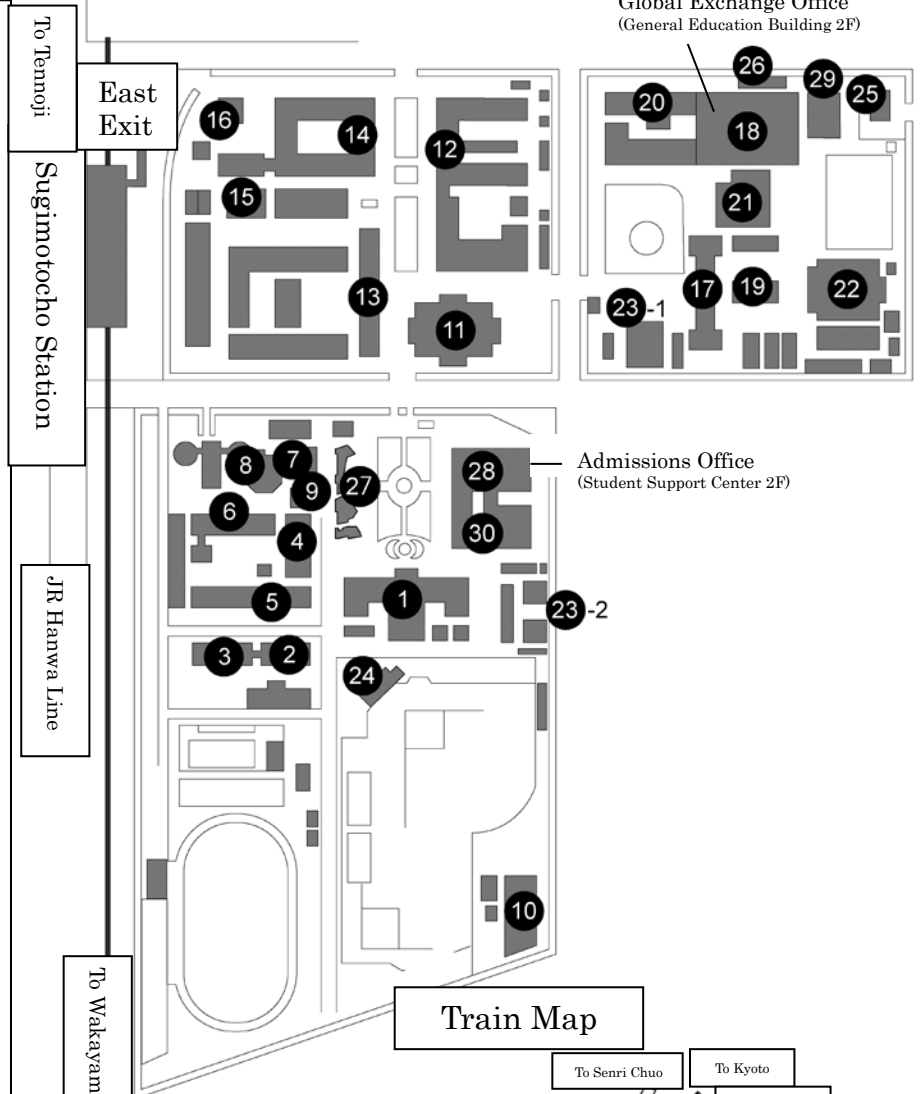
- ① To receive directly at the counter
Go to the administrative office in charge of each graduate school at the Student Support Center.
Monday – Friday (Except public holidays and other closed days)
9:00 – 17:00 (Except from 12:00 – 12:45)
- ② To request by post
 - A. Write “Graduate School Master Course Applicant Qualifications Exam Application Request” in red on the front and the postal code, address, name, and phone number of the sender on the back.
 - B. Enclose a reply envelope (A fixed form envelope with a ¥92 reply stamp attached, and the recipient’s postal code, address, and name written clearly).
 - C. Address: 3-3-138 Sugimoto, Sumiyoshi-ku, Osaka-shi 〒558-8585
Osaka City University, Student Support Center
Administrative Office of the Graduate School of XX
(Make the request to the applicant’s desired graduate school [See back cover])
- ③ If you download from the OCU Web, please print single sided page on A4 size white paper.
[OCU Website <http://www.osaka-cu.ac.jp/ja/admissions/graduate/ishorui>]

Sugimoto Campus

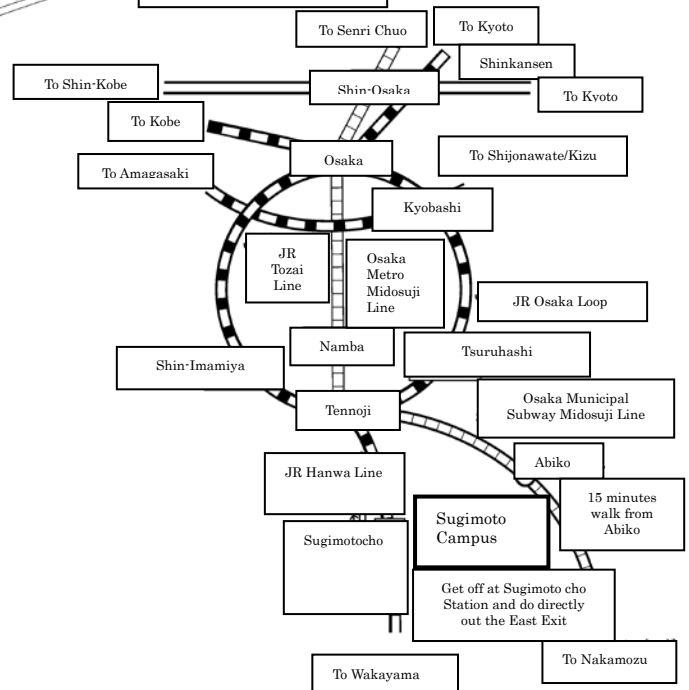
〒558-8585 3-3-138 Sugimoto, Sumiyoshi-ku, Osaka-shi
 Get off at Sugimotocho Station of JR Hanwa Line and proceed directly out the East Exit or
 Get off at Abiko Station of Osaka Metro Midosuji Line and walk southwest approximately 15 minutes from Exit 4



1. Building No. 1
2. Faculty of Business
3. Faculty of Economics
4. Faculty of Law
5. Faculty of Literature and Human Sciences
6. Economic Research Building
7. Urban Research Plaza
8. Tanaka Memorial Hall
9. Health and Medical Services Center
10. Hydraulic Laboratory
11. Media Center
12. Faculty of Science
13. Faculty of Engineering
14. Faculty of Human Life Science
15. Central Workshop
16. Faculty of Human Life Science Annex
17. Building No. 2
18. General Education Building
19. Building No. 4
20. Basic Experiment Education Building
21. Gymnasium No. 1
22. Gymnasium No. 2
- 23-1 Main Student Hall
- 23-2 Second Student Hall
24. Baseball Ground Stands
25. Guest House
26. Business Incubator
27. Takahara Hall
28. Student Support Center
29. General Research Building
30. Main Administration Building



Train Map



● Inquiries

◆ For inquiries regarding department, field, exam subject, past exam questions, etc.

Student Support Center, OCU		
Address: 3-3-138 Sugimoto, Sumiyoshi-ku, Osaka-shi 〒558-8585		
Office in Charge of the Graduate School of Business	TEL 06-6605-2202	FAX 06-6605-3649 [Common to all graduate schools] (For inquiries by FAX, be certain to clearly write the name of the graduate school you wish to contact.)
Office in Charge of the Graduate School of Economics	TEL 06-6605-2251	
Office in Charge of the Graduate School of Law	TEL 06-6605-2303	
Office in Charge of the Graduate School of Literature and Human Sciences	TEL 06-6605-2353	
Office in Charge of the Graduate School of Science	TEL 06-6605-2504	
Office in Charge of the Graduate School of Engineering	TEL 06-6605-2651	
Office in Charge of the Graduate School of Human Life Science	TEL 06-6605-2803	
◎ Opening hours: Monday to Friday (Except for public holidays and other closed days) 9:00 – 17:00 hrs. (Except 12:00 – 12:45)		

◆ For inquiries concerning application processes, etc.

Admissions Office	TEL 06-6605-2141
--------------------------	-------------------------

How to obtain a copy of the Application Guidelines, including an official Application Form (by post)

1. On the front of the envelope, write or type in red ink “Request for Application Guidelines for the Graduate School of _____ Master Course (Special Admission Track for International Students)”.
2. Enclose a reply envelope, *Kaku-gata No. 2* size (24.0 cm x 33.2 cm).
(Attach a ¥300 reply stamp with writing beside the stamp “*Yu Mail*” in red, and write your own postal code, address, and name as the addressee on the front of the reply envelope).
3. Send to: Admissions Office, Osaka City University
〒558-8585 3-3-138 Sugimoto, Sumiyoshi-ku, Osaka-shi



Admissions Office

3-3-13, Sumiyoshi-ku, Osaka-shi 〒558-8585
Issued June 2018